



High Availability Local Networks

HL-4GXVU-F

GPON Wireless Router
4x Gigabit LAN Port
Wi-Fi6 AX1800
With VoIP
With USB



Product Description

HALNy GPON Gateway is an innovative and powerful product for business and residential subscribers.

All products within the GPON family comply with current ITU-T standards for gigabit passive optical networks (GPONs). The solution is designed to optimize the deployment and roll-out of the service provider. **HL-4GXVU-F** design offers multi-interoperability with several OLT vendors. The ONT/ONU products are tested and have proven interoperability with most major GPON OLT Vendors.

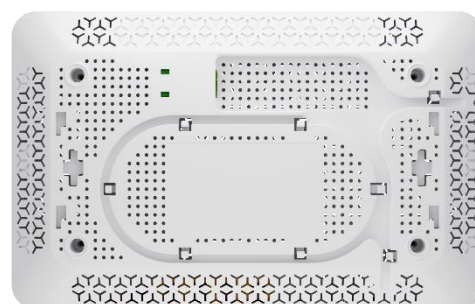
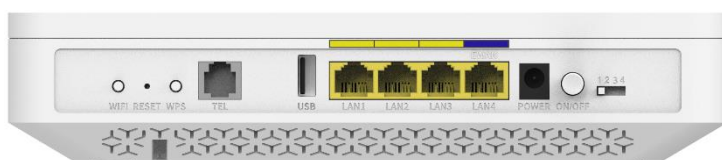
The solution is designed to optimize the deployment and roll-out of the service provider. This includes interoperability GPON ONT with advanced support for L2 VLANs and Multicast IGMP, L3 Routing with NAT, PPPoE, and easy-to-use Provisioning.

HALNy specializes in cost-effective designs and works closely with service providers to improve their business case through a comprehensive range of standard products, supporting the industry's common demands. HALNy also provides custom designs and services to meet unique customer needs.

Housing can be sold with the Operator logo on the top cover.



**DEVELOPED
IN POLAND**



All specifications are subject to change without notice. The above product picture is a sample for reference and may vary. Please check with your supplier for exact offers. Actual data throughput and Wi-Fi coverage will vary from network conditions and environmental factors, including the volume of network traffic, building material and construction, and network overhead, resulting in lower actual data throughput and wireless coverage. Quoted network speeds and bandwidth based on current IEEE specifications. Actual performance may be affected by network and service provider factors, interface type, and other conditions.

www.halny.com

FIBRAIN Sp. z o.o.
36-062 Zaczerwie 190F
Poland

phone
e-mail

+48 17 866 08 00
sales@halny.com
support@halny.com



Hardware Specification

Flash / RAM	128MB / 256MB	Storage Temp.	-10°C~60°C (14F~140F)
CPU	Dual Core 900MHz	Operating Temp.	0°C~45°C (32F~113F)
WAN Port	GPON B+ SC/APC 2.488Gbps Downstream 1.244Gbps Upstream	Operating Humidity	10% ~ 90% (non-condensing)
GPON Tx	0.5 ~ 5 dBm	Power Supply	DC +12V / 1.5A
GPON Rx	-10 ~ -27 dBm	Buttons	ON/OFF Power WPS, Reset, Mode
LAN Port	4 x port 10/100/1000BASE-T (RJ-45) Auto-sensing, auto-detection MDI/ MDI-X	Dimension (W x D x H)	225 x 142 x 46mm
TEL Port	1 x FXS, RJ11	Operating Frequencies	802.11b/g/n: 2401-2484 MHz 802.11a/n/ac/ax: 5170-5835 MHz
LED	POWER, PON, LOS, NET WLAN 2.4G, WLAN 5G, WPS, LAN1-4, TEL	Maximum power of the transmitter	2.4 GHz: up to 20 dBm 5 GHz: up to 23 dBm Transmit power control
WIFI	2T2R AX1800 5Ghz MU-MIMO Internal antennas	USB (LTE Backup)	1 port USB type A 2.0

Software Specification

GPON	ITU-T G.984.x and G.988 OMCI G.984.4 / G.988 AES / FEC / DBA Dying GASP Multicast GEM	L3 (HGU Mode)	Router / NAT / PAT PPPoE / DHCP Client Static IP DHCP Server IGMP Proxy VPN Pass-through UPnP DMZ / Port Forwarding IPv4 / IPv6 IPv6 Dual Stack IPv6 DS-Lite IPv6 Firewall RFC-6092 WAN bridge
Provisioning	Easy to use provisioning for all ONT configuration DOCSIS like provisioning over GPON/EPON TR-069 OMCI OTT Upgrade DHCP 66/67 XML RestAPI / JSON	Telephony	SIP, DTMF, Dial Plan
Management	WEB (two user accounts) Remote Syslog, OMCI	EasyMesh	Controller and Agent

All specifications are subject to change without notice. The above product picture is a sample for reference and may vary. Please check with your supplier for exact offers. Actual data throughput and Wi-Fi coverage will vary from network conditions and environmental factors, including the volume of network traffic, building material and construction, and network overhead, resulting in lower actual data throughput and wireless coverage. Quoted network speeds and bandwidth based on current IEEE specifications. Actual performance may be affected by network and service provider factors, interface type, and other conditions.



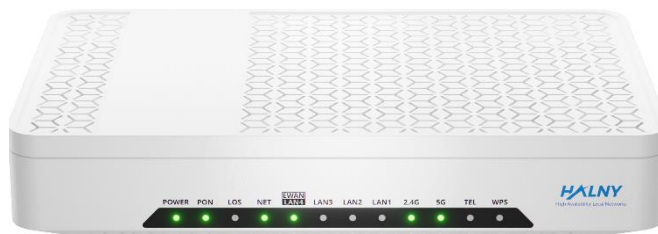
Interoperability Test Result

NOKIA (Alcatel-Lucent)	Cisco/Altice
DZS	FIBERHOME
ZTE	RAISECOM
HUAWEI	ZYXEL
CALIX	ZHONE
ADTRAN	ISKRATEL

Ordering Information

HL-4GXVU-F / HL-4GXVU-F-EU	HALNY NETWORKS GPON ONT 4-PORT LAN 10/100/1000, B+ SC/APC, WIFI B/G/N/AC/AX 2.4GHZ/5GHZ AX:2X2, 1XPOTS, 1XUSB, Router/Bridge, with European Power Adapter
HL-4GXVU-F-US	HALNY NETWORKS GPON ONT 4-PORT LAN 10/100/1000, B+ SC/APC, WIFI B/G/N/AC/AX 2.4GHZ/5GHZ AX:2X2, 1XPOTS, 1XUSB, Router/Bridge, with North America Power Adapter
HL-4GXVU-F-UK	HALNY NETWORKS GPON ONT 4-PORT LAN 10/100/1000, B+ SC/APC, WIFI B/G/N/AC/AX 2.4GHZ/5GHZ AX:2X2, 1XPOTS, 1XUSB, Router/Bridge, with United Kingdom Power Adapter
HL-4GXVU-F-NOPS	HALNY NETWORKS GPON ONT 4-PORT LAN 10/100/1000, B+ SC/APC, WIFI B/G/N/AC/AX 2.4GHZ/5GHZ AX:2X2, 1XPOTS, 1XUSB, Router/Bridge, without Power Adapter
HL-FIBER-TRAY	HALNY TRAY FOR ONT/CPE

Please **contact sales** for detailed order information



All specifications are subject to change without notice. The above product picture is a sample for reference and may vary. Please check with your supplier for exact offers. Actual data throughput and Wi-Fi coverage will vary from network conditions and environmental factors, including the volume of network traffic, building material and construction, and network overhead, resulting in lower actual data throughput and wireless coverage. Quoted network speeds and bandwidth based on current IEEE specifications. Actual performance may be affected by network and service provider factors, interface type, and other conditions.